



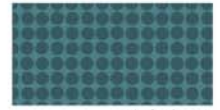
Festival Quilt (Q-022B)



Fabric requirements



Fabric A
 3240204 #2
 1-1/4 yards



Fabric B
 3240206 #2
 1/3 yard



Fabric C
 3240202 #2
 1/3 yard



Fabric D
 3240201 #2
 1/3 yard



Fabric E
 3240202 #1
 1/2 yard



Fabric F
 3240205 #2
 1/2 yard



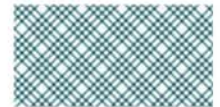
Fabric G
 3240202 #3
 1/2 yard



Fabric H
 3240204 #3
 1/2 yard



Fabric I
 3240201 #1
 1/3 yard



Binding
 3240203 #2
 1/2 yard



Suggested Backing
 3240205 #3
 4 yards

Exclusive Quilt Design by Anne Sullivan of Play Crafts for Camelot Fabrics
 Fabric collection: Flourish by Ciana Bodini for Camelot Fabrics
 The direction of the fabrics in the digital imagery may not be accurate to the final product.



Blog, Facebook, Twitter @CamelotFabrics
 Pinterest, YouTube & Instagram @Camelot_Fabrics
 camelotfabrics.com • camelotfabricsblog.com
 Toll-Free: 1-800-361-4120 • 514-382-2400
 info@camelotfabrics.com • www.camelotfabrics.com

Finished Quilt Size: 60" x 60"

OTHER TOOLS & SUPPLIES

- Rotary cutter & mat
- Sewing machine & coordinating thread
- Iron & pressing surface
- Pencil
- 2 yds extra-wide quilt batting (at least 64" wide)

NOTES

- For best results read through all the instructions before starting.
- Please wash, dry & iron your fabric before beginning, and trim selvages.
- Unless otherwise directed, sew all seams with a scant 1/4" allowance and the fabrics' Right Sides together, and press seams open as you go.
- WOF = Width of Fabric

CUTTING

Fabric A

Cut (12) 2-1/2" x WOF strips:

Sub-cut (18) 2-1/2" x 14-1/2" rectangles & (18) 2-1/2" x 10-1/2" rectangles.

Cut (2) 4" x WOF strips:

Sub-cut (20) 4" squares - sub-cut each square corner-to-corner to yield (40) triangles.

Cut (1) 10-1/2" strip:

Sub-cut (3) 10-1/2" squares.



Cut (2) 8" X WOF strips:

Sub-cut (10) 7-1/2" x 8" rectangles.



Fabric I

Cut (1) 8" x WOF strip:

Sub-cut (5) 7-1/2" x 8" rectangles.

Binding

Cut (6) 2-1/2" x WOF strips.

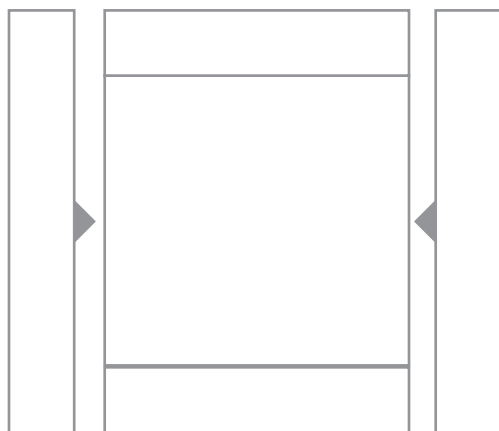
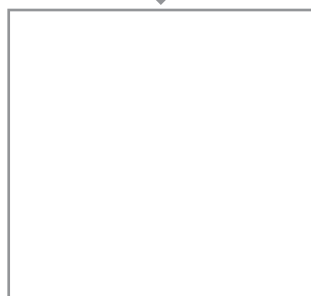
Backing

Cut (2) 72" x WOF rectangles.

FOCAL SQUARE BLOCKS



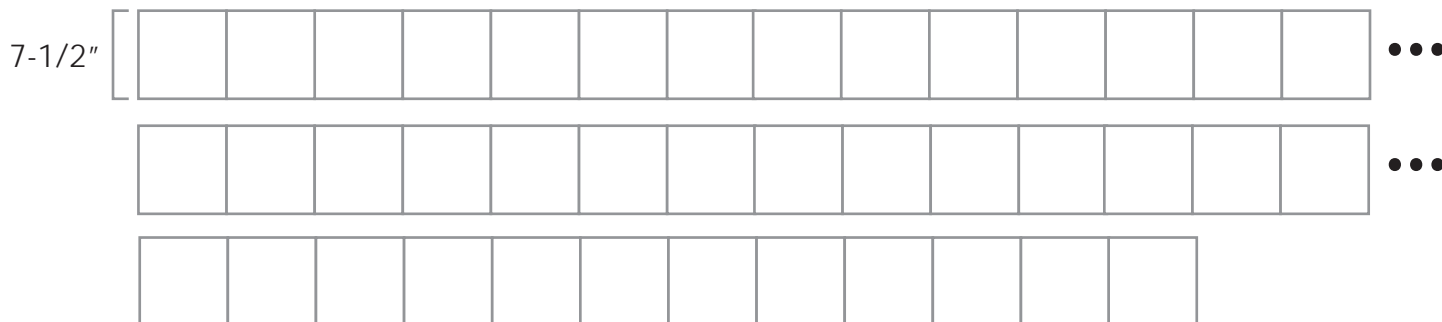
1. Sew a 2-1/2" x 10-1/2" Fabric A rectangle to the top- and bottom edges of each 10-1/2" Fabric B-C-D square.



2. Sew a 2-1/2" x 14-1/2" Fabric A rectangle to the left- and right-hand edges of each of the resulting units.

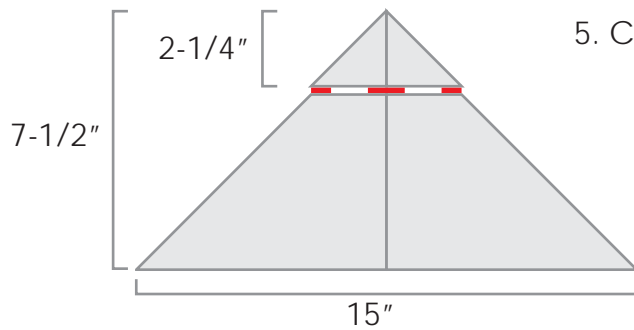
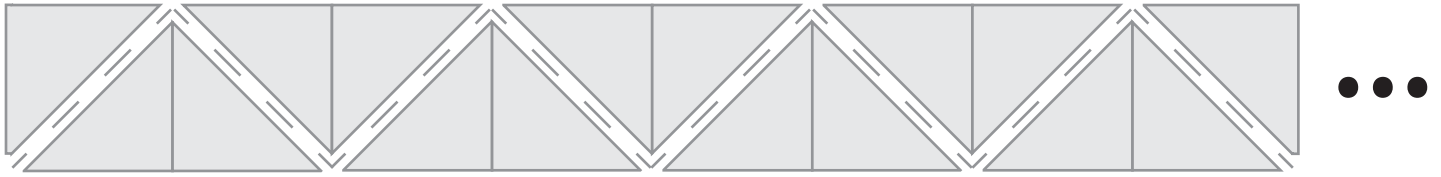
3. Join (40) of your 7-1/2" x 8" Fabric E - I squares at their 7-1/2" edges to make a long strip as shown. We're showing the row in (3) parts for spacial considerations, but yours should be one continuous strip.

Note: be sure to join the rectangles at the 7-1/2" edges, *not* the 8" edges. This will give you a series of 7-1/2" squares, because of the seam allowance.

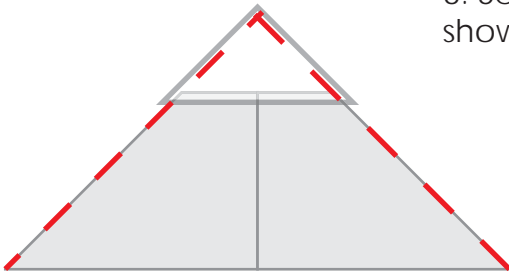


4. Cut along the 45° angle between the seams of each square, making (39) HST sets as shown.

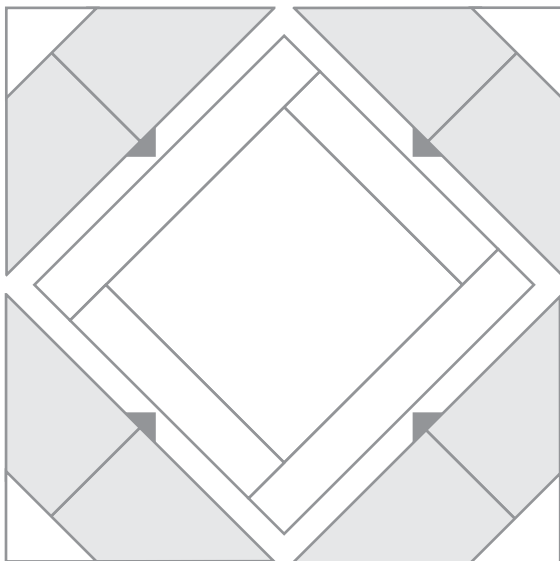
Note: because the first & last rectangles of the strip are not quite square, you should use a 45° angle tool lined up with the seams to cut these pieces.



5. Cut 2-1/4" from the tip of each triangle set.



6. Sew a Fabric A triangle to the tip of each HST set as shown, and trim edges.



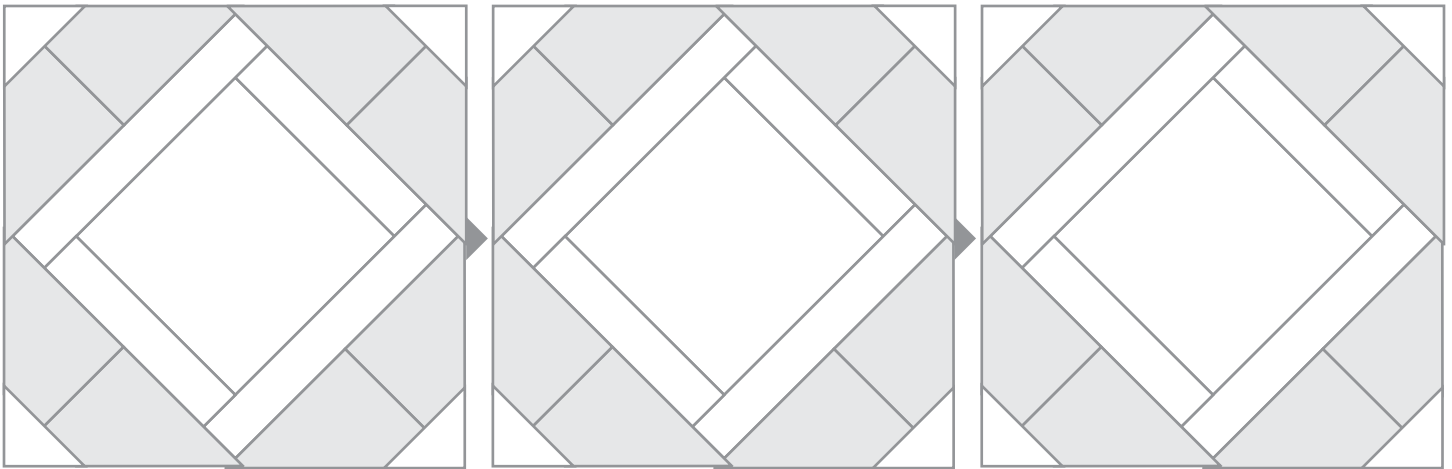
7. Sew (4) of the HST units created in Step 6 to the (4) edges of each bordered square from Step 2 as shown. Please refer to the quilt illustration on Page 1 for the arrangement of HST units & squares.

You'll have some leftover corners - this is fine.

8. Trim each block to 20-1/2" square, or slightly smaller if your seam allowance resulted in smaller blocks. The important thing is that all blocks be the same size.

MAKING THE QUILT TOP

1. Sew the Blocks in (3) rows of (3) blocks as shown, again referring to Page 1 for block order.



2. Sew the rows together to complete the Quilt Top.

FINISHING THE QUILT

1. Join the (2) Backing rectangles along their 72" edges. Trim to square, if desired.
2. Layer the Quilt Top & Backing, Right Sides out, with a layer of batting between them. Baste & quilt as desired.
3. Join the Binding strips end-to-end, press into a long strip of double-fold binding, and bind your quilt.